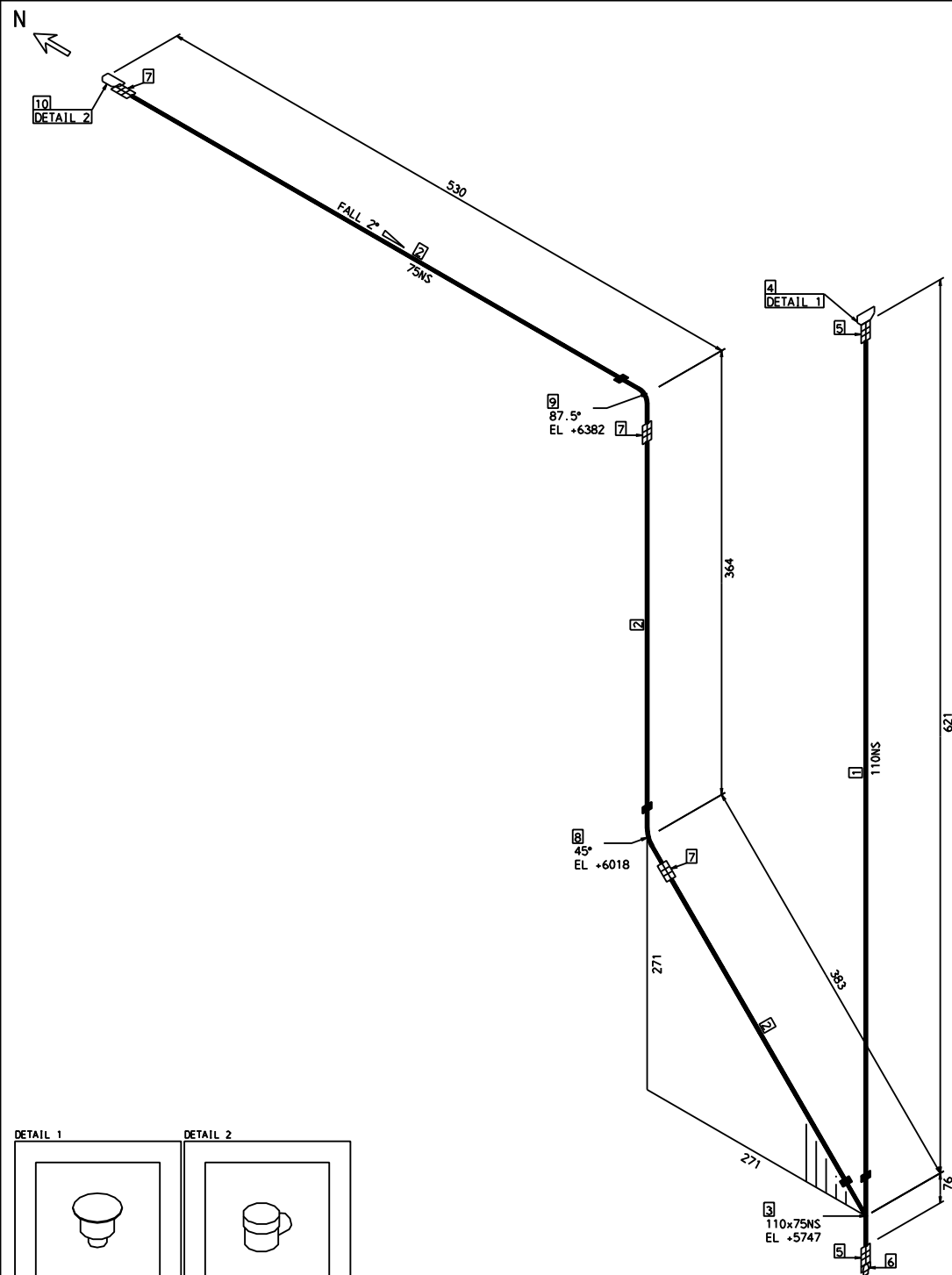


ERECTION MATERIALS

PT NO	COMPONENT DESCRIPTION	N. S. (MM)	ITEM CODE	QTY
PIPE				
1	BLÜCHER EUROPIPE WITHOUT SOCKET AISI 304 / EN 1.4301	110	-	0.5M
2	BLÜCHER EUROPIPE WITHOUT SOCKET AISI 304 / EN 1.4301	75	-	0.8M
FITTINGS				
3	BLÜCHER OBLIQUE BRANCH 45° TYPE 838 AISI 304 / EN 1.4301	110 x 75	5705499402438	1
4	BLÜCHER LOWER PART FOR MARINE DRAIN TYPE 470.200 AISI 304 / EN 1.4301	110	5705499106237	1
5	BLÜCHER DOUBLE COUPLING TYPE 841 AISI 304 / EN 1.4301	110	-	2
6	BLÜCHER SOCKET PLUG TYPE 844.000 AISI 316 / EN 1.4404	110	5705499402957	1
7	BLÜCHER DOUBLE COUPLING TYPE 841 AISI 304 / EN 1.4301	75	-	3
8	BLÜCHER BEND 45° TYPE 820.090 AISI 304 / EN 1.4301	75	5705499401325	1
9	BLÜCHER BEND 87.5° TYPE 820.090 AISI 304 / EN 1.4301	75	5705499401400	1
10	BLÜCHER LOWER PART FOR MARINE DRAIN TYPE 475.000 AISI 304 / EN 1.4301	75	5705499106275	1



DATE: 27 SEP 2012
BATCH REF: =22695/32
PIPING SPEC: EUROPIPE

ISS: -1

BLPIPE1

DRG
1 OF 1

PIPE NS (MM) 110 75
CL LENGTH 0.9 1.3

[1] DENOTES PIPE SPOOL NO
[7] DENOTES PARTS LIST NO

SHOP WELD FIELD WELD SOCKET WELD SCREWED JOINT COMPN JOINT SITE CONNECTION PIPE SUPPORT LAGGED PIPE TRACED PIPE